

The Crossing at Smithfield

Smithfield, Rhode Island

Client: WS Development Corporation of Chestnut Hill Massachusetts

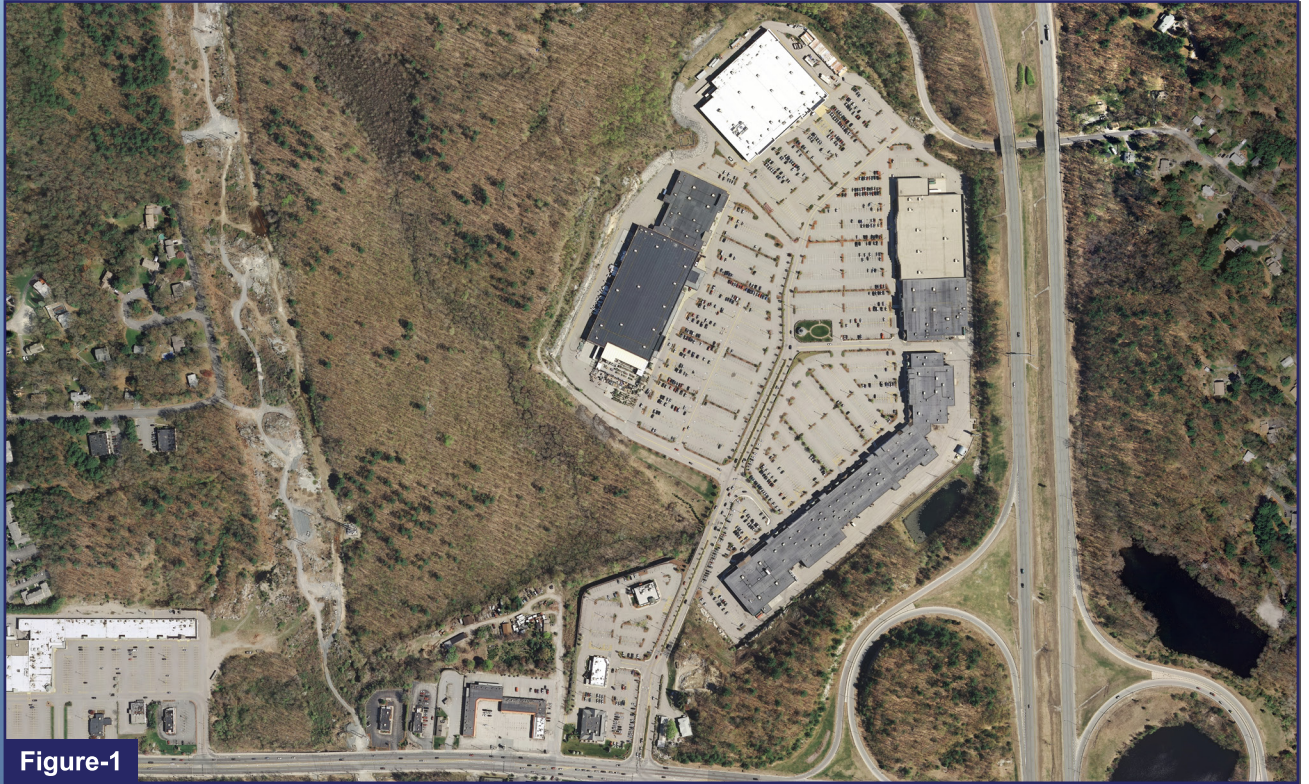


Figure-1

Crossman Engineering performed the civil and environmental engineering designs for the Crossing at Smithfield, a 70 acre retail development which is home to national retail stores such as Home Depot, Target, Kohl's, Dick's Sporting Goods, Barnes and Noble, and numerous others. Our services included the site layout, grading, stormwater, & utilities. Our staff was also responsible for addressing the environmental permitting aspects of the project.



Figure-2

Figure-1:
Aerial view of
The Crossing at
Smithfield

Figure-2:
Ground view of
The Crossing at
Smithfield